



Good Food-Good People 2012 CSA Local Farm Share Program

Supplied by a collaborative of over 30 farms, orchards, patches
and producers less than 100 miles from your home



Fresh Fruit Share

- ◆ Features fresh strawberries, cherries, blueberries, blackberries, specialty berries, peaches, pears and Asian pears, apples, many varieties of melons and other fruits as seasonally available.
- ◆ Unsprayed/low spray fruit preferred whenever possible. All our produce is grown by local farmers we know and trust.
- ◆ Shares available on *Tuesday* or *Saturday* schedule from May 15/19 until September 11/15. You purchase 18 shares out of 20 delivery dates—your choice of 2 vacation days.
- ◆ Note our inclusion of early-season strawberries in our 2012 Fruit Share. Full-season price increase over 2011 rates covers the cost of this very popular fruit and two additional weeks of delivery service at the beginning of the season.
- ◆ Fruit Share values average \$15/week, total \$275, and is designed to satisfy 2-4 folks, depending on your fruit consumption. Double shares available at a discount. Packed in a waxed box to protect fresh produce.

Winter All-Farm Share

- ◆ Features the cream of the late fall crops: fresh lettuces and cooking greens, hydroponic tomatoes and other greenhouse crops, a wide variety of storage root crops, potatoes and winter squashes, apples and pears—ALL LESS THAN 100 MILES LOCAL!!
- ◆ “Hand-crafted” foods produced in our region will also be highlighted in each weekly box. Choices range from grass-pastured meats to artisan cheeses, granolas, cookies and breads, honey, molasses, jams and fruit butters, fresh deli items and snack foods, “put up” summer crops like pickles, fruits, salsas and pesto, and many delights not yet dreamed of!
- ◆ All-Farm Share includes 1 dozen fresh Weathertop Farm XL Brown eggs every week.
- ◆ Deliveries run from the first week of November through the end of December. You purchase 8 out of 9 weeks—choice of one vacation day.
- ◆ WinterShare All-Farm Share value averages \$37/week, total \$295, and is designed to satisfy 2-4 folks, depending on your general local foods consumption. Packed in a waxed box to protect fresh products.
- ◆ Register in September, *or* pay along with main season shares to achieve our Local Lunatic discount.

Fresh Vegetable Shares: the Advocate & the Visionary

- ◆ 40+ varieties of fresh garden vegetables & culinary herbs throughout the season—plenty of well-loved staples with a sprinkling of specialty crops.
- ◆ Over 95% of our vegetables are USDA-certified organic or biologically-grown. All our produce is grown by local farmers we know and trust.
- ◆ Shares available on *Tuesday* or *Saturday* schedule from May 8/12 through October 23/27. You purchase 25 shares out of 27 delivery dates—your choice of 2 vacation days.
- ◆ **Veggie Visionary Share** values average \$24/week, total \$595, and is designed to satisfy 2-4 folks, depending on your vegetable consumption. (This is the same full-size share we have always offered.) Double shares of the Veggie Visionary available at a discount. Packed in a $\frac{3}{4}$ bushel wax box to protect fresh produce.
- ◆ **Veggie Advocate Share** values average \$17/week, total \$425. It will feature a more basic representation of local veggies than the Visionary and is designed to satisfy two moderately-devoted vegetable eaters. Packed in a $\frac{1}{2}$ bushel waxed box to protect fresh produce.

Fresh Pastured Egg Share

- ◆ Weathertop Farm’s Extra Large Brown Eggs from truly free-ranging grass pastured poultry! Mega-fresh straight from the farm and completely free of antibiotics or hormones.
- ◆ One share consists of 1 dozen eggs per week for 25 out of 27 weeks from May 8/12 through October 23/27, delivered on Tuesday/Saturday schedule—your choice of 2 vacation days. Single \$110/Double \$215.
- ◆ Egg sharers must also be registered for FGFP’s vegetable and/or fruit shares.

Blacksburg • Christiansburg

Tuesdays



Saturdays

Check out our Local Lunatic Discount on page 5!

Roanoke • Floyd



2012 GFGP Share Box Return and Deposit/Use Fee Options

After trialing a new packaging program with our Vegetable Shares last year, we are pleased to report that this experiment was an enthusiastic success, producing the triple benefits of 1.) better protection for our fresh produce, 2.) reduction and reuse of non-recyclable packaging materials, and 3.) reduced cost to our sharers for packaging that would otherwise be thrown away after one use.

In order to minimize problems with fruits damaged in transport, GFGP will extend the benefits of hard-shell packaging to our Fruit Shares this year. A different size and shape waxed box will be used for Fruit and Vegetable Shares, but the cost and policy for all boxes will be identical. We appreciate your willingness to share not only fresh local produce with us, but also the burden, responsibility, and true cost of our mutual food packaging footprint. Note: This information applies to Fruit **and** Vegetable Shares in 2012, but not to Egg Shares.

Full Service Drop Site = No Use/No Charge Packaging Option

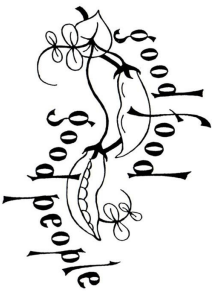
All GFGP Fruit and Vegetable Shares at every site will be packaged in new or slightly used foldable waxed produce boxes. ***At Full Service Drop Sites, sharers will be expected to bring their own shopping bags and unload the boxes on site, thus leaving us with the intact box clean and little used.*** There is no packaging charge at Full Service Drop sites, since we retain the boxes and can utilize this investment to bring you produce throughout the duration of the season.

Quick Stop Drop Site = Deposit/Use Fee Option

Sharers who choose Quick Stop sites will be asked to pay a “deposit/use fee” along with your pre-season registration to cover the baseline cost to GFGP per weekly box, an average cost of \$2.00 per box @ 25 weeks = a season total of \$50.00/single share, or \$100.00/double share. Since site hosts at Quick Stop sites cannot accept returned boxes, sharers must remove boxes weekly. *Please do not leave your boxes or return boxes to Quick Stops.* You own the boxes now...

...but our incentive for you to return those boxes to us—***clean and ready for reuse***—is a refund in “GFGP Bucks” at our Full Service drop sites where a GFGP staff person is on duty. Each wax box returned in serviceable condition will be valued at one GFGP Buck, redeemable as one US dollar through any of our market booths, through our A La Carte virtual market program, at the Greens Garage in Floyd, or as part of a future CSA payment. The differential in your original deposit/use fee and your returned value goes to reimburse labor involved in handling, cleaning and transporting boxes and to cover unusable boxes that may slip by our staff. Locations that accept box returns are listed on our Drop Site Schedule as “Full Service Drop Sites”.

Please consider this Fruit and Vegetable Share packaging arrangement when choosing your 2012 GFGP Drop Site. If you choose a Quick Stop Drop Site, please remember to add the box deposit/use fee for each share to your registration payment. Thank you for sharing this opportunity and obligation.



Good Food-Good People Estimated Harvest Chart*

320 Fork Dr.
Floyd, VA 24091
540-745-4347 x 2
gfgpfarmshares@swva.net

	May	June	July	August	September	October	November	December
VEGETABLES								
Sorrel								
Spinach								
Squash, Summer								
Squash, Winter								
Tatsoi								
Tomatoes								
Tomatillos								
Turnips								
Yams/Sweet Potatoes								
HERBS								
Basil								
Chervil								
Chives								
Cilantro								
Dill								
Lemon Balm								
Lavender								
Marjoram								
Mint								
Oregano								
Parsley								
Rosemary								
Sage								
Savory								
Shiso								
Tarragon, French								
Thyme								
FRUIT								
Apples								
Apricots								
Blackberries								
Blueberries								
Cherries								
Currants								
Grapes								
Melons								
Raspberries								
Pears								
Pears, Asian								
Peaches								
Plums								
Strawberries								

*This chart represents the time span during which the listed crops *could be* seasonally available and included in your share. The actual contents of your weekly share will be determined by weather conditions, market availability, price and other factors. We do our best to offer a seasonal variety of high quality products in every share. We appreciate your flexibility and support.



Good Food-Good People 2012 Local Farm Shares Registration and Payment Information Registration and Full Payment Deadline:

April 25, 2012

All shares are filled on first paid-first served basis. We have a limited amount of all shares available and we have historically sold out. Please reserve your shares early. **Vegetable and fruit shares can be purchased separately or together for pick up at most drop sites (see drop site details).** Egg shares may only be purchased in conjunction with fruit and/or vegetable shares. Winter Farm Shares drop sites are limited to one location each in Blacksburg (YMCA), Roanoke (West End Community Market) and Floyd (Greens Garage). Weekly e-mail newsletters with recipes, grower stories, and food information are included with your share.

<u>Full Season Costs</u>	<u>(Single/Double)</u>
Fresh Fruit Share	\$275/\$540
Veggie Visionary Share	\$595/\$1180
Veggie Advocate Share	\$425/no double-discount
Fresh Egg Share	\$110/\$215
Winter Farm Share	\$295/no double-discount

Additional annual \$10.00 non-refundable registration fee applies to all sharers irrespective of type or number of shares. Please add this registration fee to your share payment check. Thank you.

Local Lunatic Discount

Are you loco for local foods? If your shares total \$1275 or more (before registration fee, box fee, or additional charges), please take \$25 off your total payment. Thanks for your commitment!

Additional Service Charges

Any post-deadline changes or special services mean extra administrative labor for us. Please be aware that any of the following changes you make will incur a \$15 fee:

- ◆ Add or cancel a share to your order after April 25th
- ◆ Change your dropsite or delivery day after April 25th
 - ◆ Utilize our payment plan
 - ◆ Failure to pay in full by April 25th

You are welcome to make changes to your share purchase free-of-charge before April 25th.

Please complete our registration form in this packet and mail with your check to
Good Food-Good People, 320 Fork Dr. Floyd, VA 24091
If needed, please ask about our payment plan.

Questions? Contact us at gfgpfarmshares@swva.net or (540) 745-4347 x.2

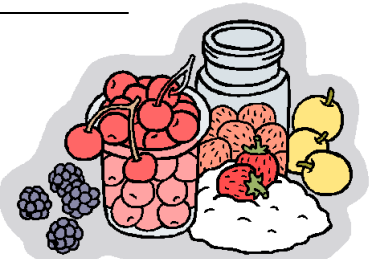


New for 2013! Hibernation Share

January 2013 - April 2013

Featuring hardy squashes, potatoes, and storage roots, fresh greenhouse and hydroponic vegetables, fresh and "put-up" fruits, fresh eggs, and a plethora of hand-crafted local food delights.

Registration will begin in late Fall, prioritizing 2012 GFGP sharers.





GFGP 2012 Local Farm Shares

Drop Site Schedule

Below are choices of delivery locations, times and dates for the 2012 GFGP Local Farm Shares. Please choose your preference of a fixed site and committed day of the week (either Tuesday or Saturday). Our drop site hosts are very kind to volunteer their facilities free of charge for sharer benefit. *Please pick up your shares within the time frame noted to avoid inconvenience to them, and to assure safety and freshness of your products. Shares not claimed by site closing time will be donated to those in need at the discretion of the host.* Thank you very much. Questions? Call (540) 745-4347, ext.2 or email us at gfgpfarmshares@swva.net.

Full Service Drop Sites allow for pick-up of Vegetable, Fruit, Egg and Winter Shares, as well as access to deliveries from our wider virtual market program, A La Carte. Most Full Service Drop Sites also feature a Farmer's Table, offering fresh produce & other local foods. A GFGP staff member will be present and temperature-sensitive products can be kept refrigerated.

Quick Stop Sites allow ONLY for the pick-up of our Vegetable, Fruit and Egg Shares. No GFGP staff member will be present. **Fruit Only Quick Stop Sites** allow ONLY for pick-up of Fruit Shares, as we share these locations with Seven Springs' veggie CSA.

Region	Site designation/Box*	Drop Point Address	Day and Time of Delivery
Roanoke	Fruit Only Quick Stop*	Roanoke Natural Foods, 1319 Grandin Rd., Roanoke	Tuesday, 1:00PM-7:00PM
Roanoke	Full Service	West End Community Market, 13 th & Patterson, Roanoke	Tuesday, 3:00PM-6:00PM
Roanoke	Quick Stop*	Raleigh Court Presbyterian Church, 1837 Grandin Rd., Roanoke	Tuesday, 1:00 -6:00 PM
Roanoke	Quick Stop*	Christ Episcopal Church, 1101 Franklin Rd, Old SW R'ke	Tuesday, 1:00PM-7:00PM
Roanoke	Full Service	Roanoke Memorial Hospital, S. Jefferson Ave & Wiley Dr. (Hospital employees only, please)	Tuesday 2:00-6:00PM
Roanoke	Full Service	Grandin Village Community Market, Roanoke	Saturday, 8:00AM-11:30AM
Daleville	Quick Stop*	Ikenberry Orchards 2557 Roanoke Rd., Daleville	Tuesday, 2:00 - 5:00 PM (2:00 - 6:00 PM July - Oct)
Blacksburg	Full Service	YMCA Thrift Store, 1000 North Main St., Blacksburg	Tuesday, 3:00-6:00PM
Blacksburg	Quick Stop*	Rainbow Riders, 307 N. Knollwood Dr., Blacksburg	Tuesday, 3:00-5:30PM
Blacksburg	Quick Stop*	Annie Kay's, 1531 South Main St., Blacksburg	Tuesday 1:30-6:30PM
Blacksburg	Full Service	YMCA Thrift Store, 1000 North Main St., Blacksburg	Saturday, 8:30AM-12:00PM
Christiansburg-Riner	Quick Stop*	private home, 100 Grove Ave., Christiansburg	Tuesday, 12:00 -7:00PM
Floyd	Full Service	Greens Garage, Roger Rd. (Rt. #683), Floyd	Tuesday, 8:00AM-9:00PM
Floyd	Full Service	Floyd Community Farmers Market, Locust St, Floyd	Saturday, 9:00 AM-12:30 AM
Floyd	Fruit Only Quick Stop*	Plenty! 177 Webbs Mill Rd. #2, Floyd	Saturday, 11:00AM-4:00PM
Floyd	Full Service	Greens Garage, Roger Rd. (Rt. #683), Floyd	Saturday, 8:00AM-9:00PM

* Vegetable and Fruit Share box deposits/use fees apply to these drop sites

GFGP 2012 Local Farm Shares Registration Form

PLEASE PRINT ALL INFORMATION BOLDLY & CLEARLY (ESPECIALLY E-MAIL)
to avoid communication errors!

Name: _____

Address: _____

City, State, Zip: _____

Phone(s): _____

E-mail (more than one is fine): _____

(E-mail is our primary mode of communication. If you do not have e-mail, please notify us.)

Preferred delivery site: (see choices on attached delivery schedule) _____

Preferred delivery day: (see choices on attached delivery schedule) _____

of Fruit Shares: _____ x price Single \$275/Double \$540 \$ _____

of Veggie Visionary Shares (lg): _____ x price Single \$595/Double \$1180 \$ _____

of Veggie Advocate Shares (med): _____ x price \$425/No double discount \$ _____

of Egg Shares: _____ x price Single \$110/Double \$215 \$ _____

of Winter Farm Shares: _____ x price \$295/No double discount \$ _____

SUBTOTAL: = \$ _____

Local Lunatic Discount: IF subtotal is \$1275 or more, subtract \$25 \$ < _____ >

Quick Stop Box Deposit: no. of veggie + fruit shares x \$50 \$ _____

(only if you choose a Quick Stop!)

Annual non-refundable registration fee of \$10.00 for all sharers \$ **10.00**

(Virginia sales tax is already included in the share prices) **TOTAL:** = \$ _____

Please make checks payable to Good Food-Good People and mail to the address below.

Any questions, please contact us at (540) 745-4347, Ext. #2 or e-mail us at
gfgpfarmshares@swva.net.

Thank you for your support of local agriculture and food production in your community!

Good Food – Good People 320 Fork Dr. Floyd, VA 24091